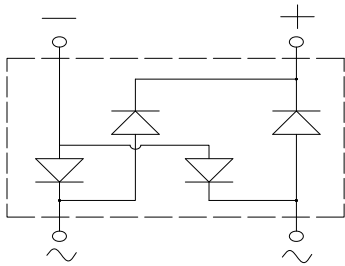
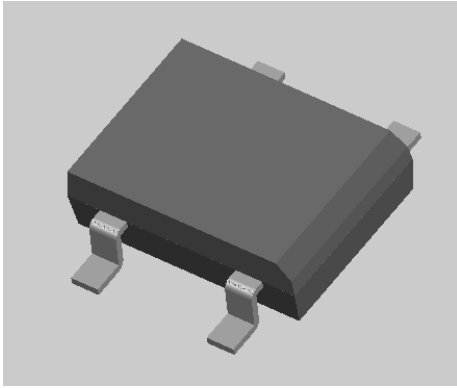


DBL151S THRU DBL157S

RoHS
COMPLIANT



Polarity: As marked on body

Maximum Ratings (T_a=25 Unless otherwise specified

PARAMETER	SYMBOL	UNIT	DBL151S	DBL152S	DBL153S	DBL154S	DBL155S	DBL156S	DBL157S
-----------	--------	------	---------	---------	---------	---------	---------	---------	---------

Device marking code

DBL151S

									1000
Maximum RMS Voltage	V _{RMS}	V	35	70	140	280	420	560	700
Maximum DC blocking Voltage	V _{DC}	V	50	100	200	400	600	800	1000
Average rectified output current @60Hz sine wave, R-load, T _c =126	I _O	A	1.5						
Forward Surge Current (Non-repetitive) @60Hz Half-sine wave, 1 cycle, T _j =25	I _{FSM}	A	60						
Forward Surge Current (Non-repetitive) @1ms, square wave, 1 cycle, T _j =25			120						
Current squared time @1ms t 8.3ms T _j =25, Rating of per diode	I ² t	A ² s	14.9						
Storage temperature	T _{stg}		-55 ~ +150						
Junction temperature	T _j		-55 ~ +150						

Electrical Characteristics T_a=25 Unless otherwise specified

PARAMETER	SYMBOL	UNIT	V _F	V	I _{FM1} @ 7A	1" \$
Maximum DC reverse current at rated DC blocking voltage per diode	I _R	A	T _j = 25			5
			T _j = 125			100
Typical junction capacitance	C _j	pF	Measured at 1MHz and Applied Reverse Voltage of 4.0 V.D.C			19



DBL151S THRU DBL157S

Thermal Characteristics $T_a=25$ Unless otherwise specified

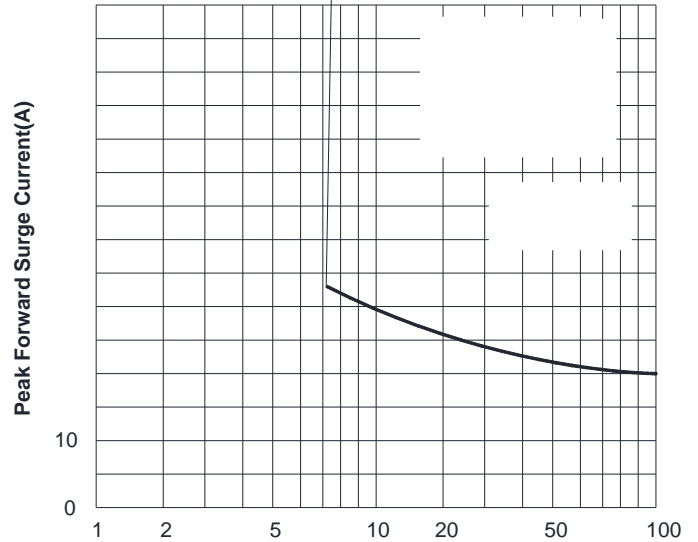
PARAMETER	SYMBOL	UNIT	DBL151S	DBL152S	DBL153S	DBL154S	DBL155S	DBL156S	DBL157S	
Typical Thermal Resistance	R J-A	/W					40.0			
	R J-L						15.0			
	R J-C						8.0			

Note: Device mounted on P.C.B with 35mm*25mm*1.7mm

Ordering Information (Example)

PREFERED P/N	PACKING CODE	UNIT WEIGHT(g)	MINIIMUM PACKAGE(pcs)	INNER BOX QUANTITY(pcs)	OUTER CARTON QUANTITY(pcs)	DELIVERY MODE
DBL151S ~ DBL157S	B1	Approximate 0.32	50	5000	20000	TUBE
DBL151S ~ DBL157S	F1	Approximate 0.32	1500	3000	21000	REEL

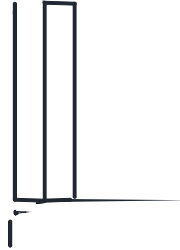
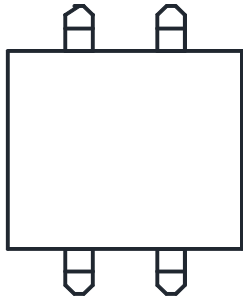
Characteristics (Typical)





DBL151S THRU DBL157S

Outline Dimensions



DBLS		
Dim	Min	Max
A	6.20	6.50
B	9.60	10.30
C	5.00	5.20
D	8.13	8.51
E	2.35	2.45
F	1.02	1.2
G	0.22	0.33
H	1.02	1.53
I	0	0.30
J	1.80	2.10



Dimensions in millimeters

Suggested pad layout

Dim	Min
P1	8.73
P2	5.12
Q1	2.22
Q2	1.2

